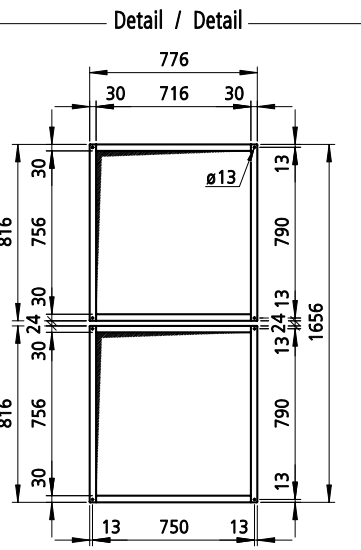
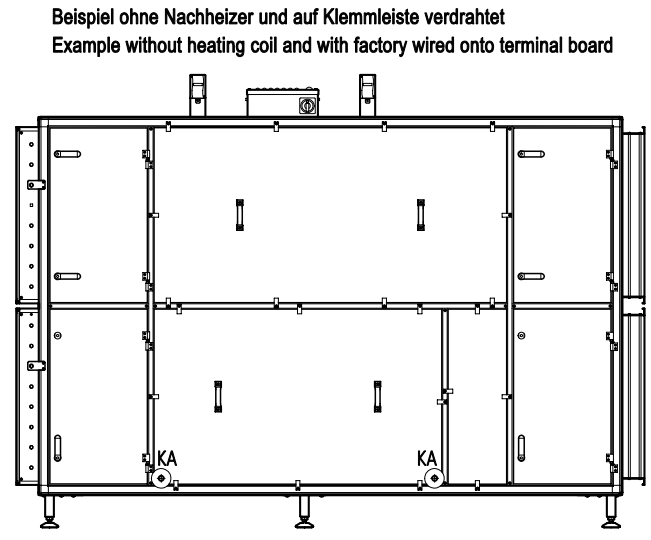
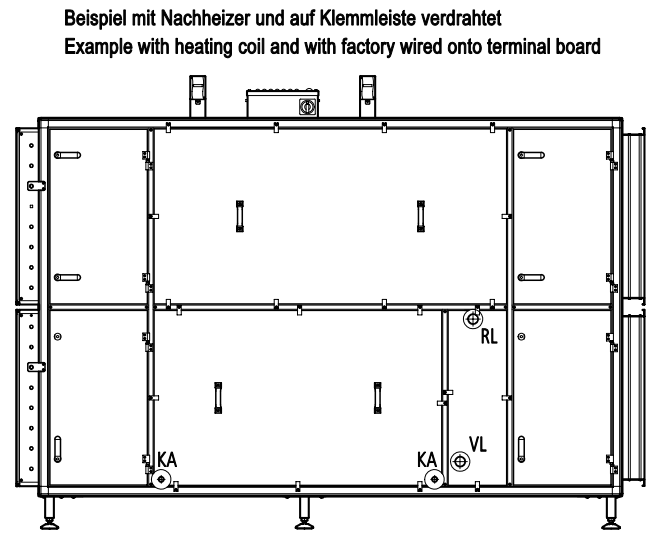
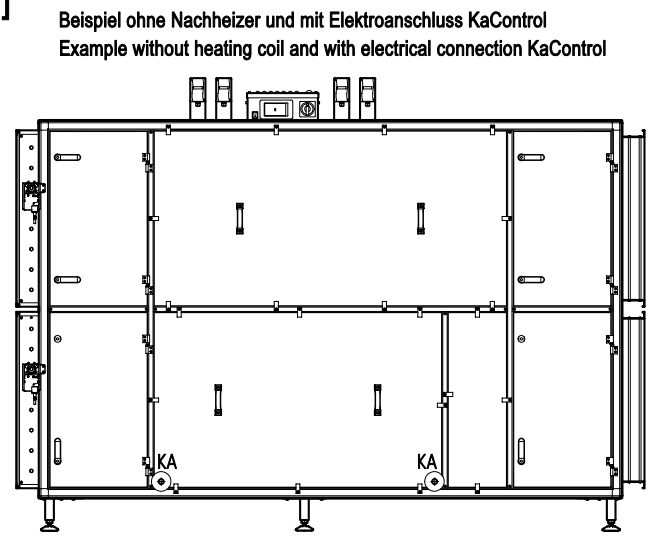
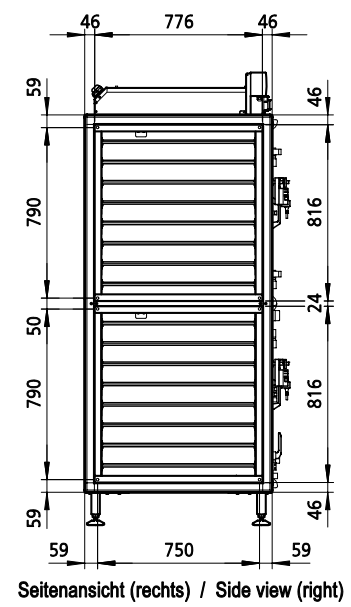
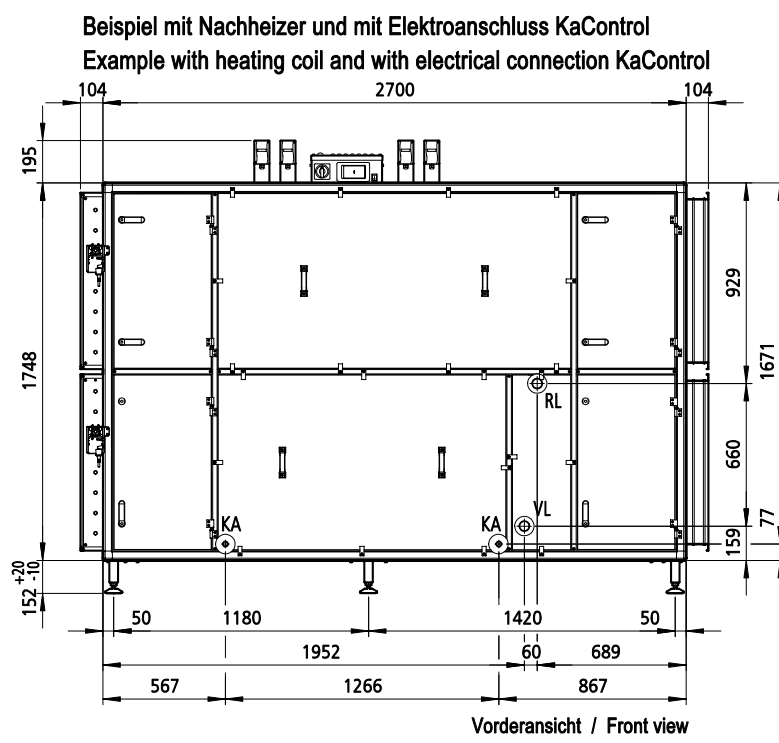
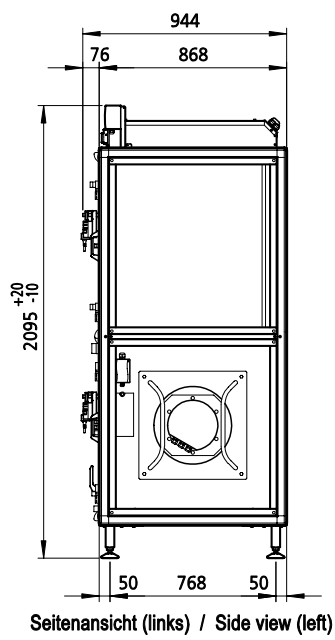
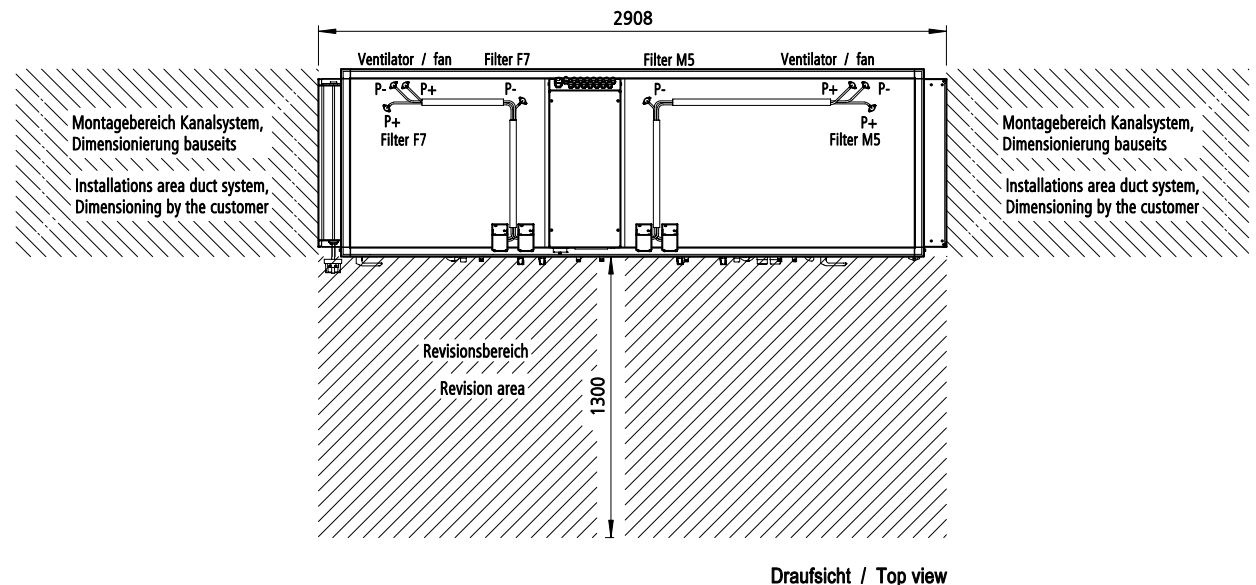


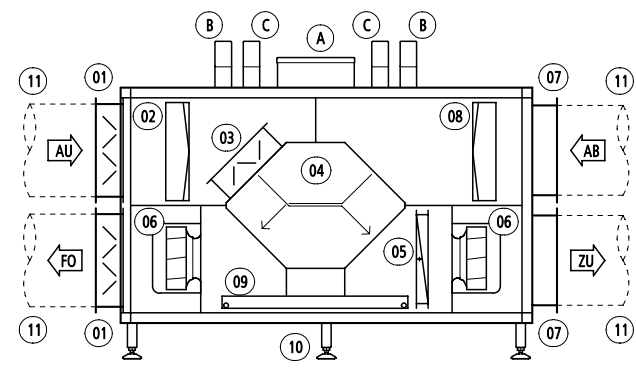
KaCompact KG, BG 40, horizontal, Abluft rechts, Abmessungen [mm] / KaCompact KG, model 40, horizontal, extract air rechts, dimensions [mm]



Abmessungen Anschlussrahmen
Dimensions connection frame



- Luftarten / Air types**
- AU = Außenluft / Outdoor air (ODA)
 - ZU = Zuluft / Supply air (SUP)
 - AB = Abluft / Extract air (ETA)
 - FO = Fortluft / Exhaust air (EHA)
- Reglungsvarianten / Control options**
- Elektroanschluss (*00) / Electrical connection (*00)**
- A auf Klemmleiste verdrahtet / factory wired onto terminal board
 - B Filter-Differenzdrucksensor / Filter differential pressure sensor
- Elektroanschluss (*H2) / Electrical connection (*H2)**
- A KaControl / KaControl
 - B Filter-Differenzdrucksensor / Filter differential pressure sensor
 - C Volumenstromsensor / Air volume sensor



- LEGENDE / LEGEND**
- 01 Sperrjalousie / Louvre
 - 02 Filter ePM1>50% (F7) / Filter ePM1>50% (F7)
 - 03 Bypassklappe / Bypass damper
 - 04 Gegenstrom-Plattenwärmetauscher / Cross-flow plate heat exchanger
 - 05 Heizregister PWW (optional) / Heating coil LPHW (optional)
 - 06 Ventilator / Fan
 - 07 Anschlussrahmen / Connection frame
 - 08 Filter ePM10>50% (M5) / Filter ePM10>50% (M5)
 - 09 Kondensatwanne / Condensate tray
 - 10 Stellfüße (einstellbar) / Adjustable feet (height-adjustable)
 - 11 Anbauteile (bauseits) / Accessory (by the customer)

- LEGENDE / LEGEND**
- VL = Vorlauf, Außengewinde 1 1/2" / Flow, external thread 1 1/2"
 - RL = Rücklauf, Außengewinde 1 1/2" / Return, external thread 1 1/2"
 - KA = Kondensatablauf 3/4" / Condensate drain 3/4"

				Datum	Name	Format	Art-Gr.	Version	CAD-Nr.
				Erst.	08.09.22	sw	3	462	2
				Änder.	26.09.22	sw			
				912088					
				CAD-Zeichnung technische Zeichnungen					
				KaCompact KG Abmessungen					
				DE / EN					
				Angeb.-Nr.					
				Auftr.-Nr.					
				Zul.Abw. ISO 2768-m					
				Bereich Dokumentation					
				Maßstab 1:50 Blatt					